
Research Papers



A study of Production Planning and Control of Chaddars and Towels with special reference to Siddeshwar Textiles, Solapur.

Dr.R.L.Laddha,
Principal,
Sambhaji College, Murum.

Abstract

Production planning is techniques of forecasting or picturing a head, every step in a long series of separate operation, each step to be taken in a right place, of right degree and at right time and each operation to be done at maximum efficiency.

Production planning involves organization of overall activity of produce a product. Various activities are involved like designing, physical facility, material handling etc. Production planning determines sequence of operation and the nature of operation to be performed along with the time requirement.

Now a days production planning and control is very important function in all industries. Alternatively production planning and controlling is necessary for directing and controlling of methods used for production and deals with the setting up to production facilities.

It is very difficult to lay down the standard task for the average worker. Again, it is for the difficult to decide on the best way of scheduling the production of goods. This is because; it involves careful planning and controlling of production. The production planning aim at laying down production, targets and see that they are achieved ensure quality control and minimize cost by proper control system. Production planning is a technique of forecasting or picturing a head, every step in a long series of sequence operation, each step to be taken in a right place, of right degree and each operation to be done at maximum efficiency.

In this project study of production planning and control of company is carried out. This involves various step of planning and controlling of manufacturing cheddars and towels.

In an organization, production planning and control helps to achieve the target to meet the delivery dates without affecting cost and quality of the product. The organization should not face shortage of material. Along with this there should not be excess inventory also. Various problems like machine breakdown, absenteeism, material shortage, should be handled carefully by production planning and control so that production and delivery dates should not get affected. So it's very important function of organization.

The steps in production planning are routing, scheduling dispatching and follow-up route or path to the followed by raw material for its conversion into finished product, scheduling, involves determining the order of priority for each work and the time to be taken to perform it.

The entire product are manufacturing by using different combination of sequence. To plan and to utilize resources and processes fully, production planning and control is must important.

2.OBJECTIVE OF STUDY

- 1)To study, understand and analysis each of and every process of company in detail.
- 2)To find out the required quality and quantity per month.

Please cite this Article as : Dr.R.L.Laddha , A study of Production Planning and Control of Chaddars and Towels with special reference to Siddeshwar Textiles, Solapur. : Indian Streams Research Journal (April ; 2012)

- 3) To establish production target and future plans.
- 4) To study production schedules and delivery period.
- 5) To determine the wastage of each and every process.
- 6) To give suggestion about production planning and control.

LIMITATION OF STUDY

- 1) This study is limited to 'Siddeshwar textile' industry which is located at Solapur.
- 2) Information collected or received from owner is considered as true.
- 3) This study is limited the function of production planning and control.

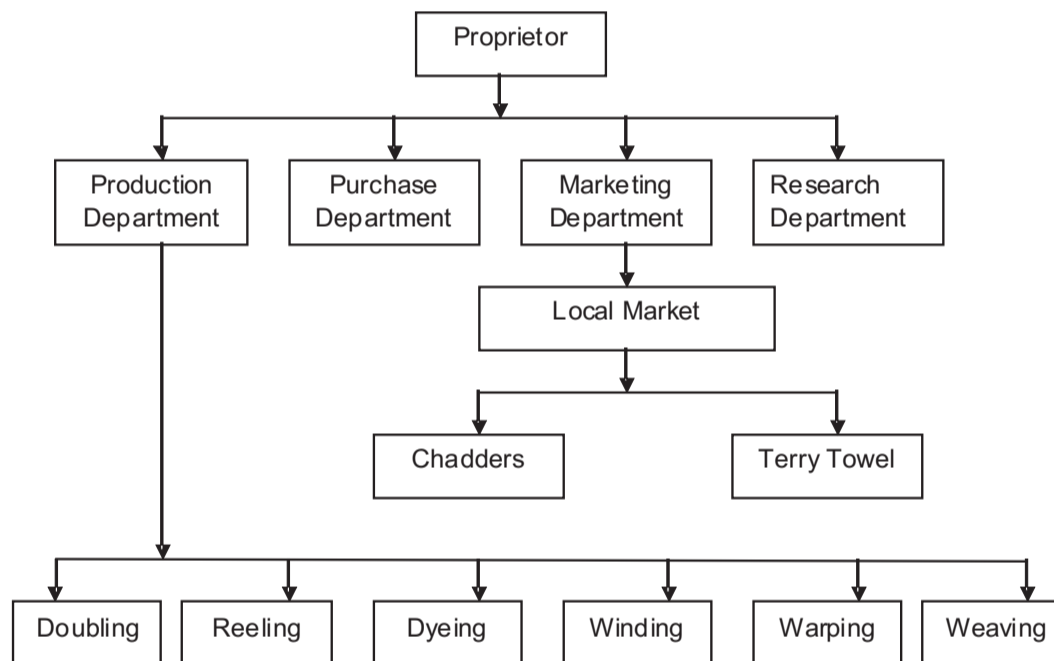
Research Methodology

Following are the methods for collecting primary data.

1. Observation method.
2. Interview method.

For this project Observation and Interview study method is used.

5. ORGANIZATION STRUCTURE



PRODUCTION LINE

According to the quality of towel & chadders production line differs.

Chadders = 12 looms

Wt/gms	Size	Quality Name
1000 gms	60*90	Swati
1100 gms	60*90	Sangeeta
1200 gms	60*90	Swati Gold
1300 gms	60*90	Ashwini Gold
1300 gms	60*90	Siddeshwar Super

Please cite this Article as : Dr.R.L.Laddha , A study of Production Planning and Control of Chaddars and Towels with special reference to Siddeshwar Textiles, Solapur. : Indian Streams Research Journal (April ; 2012)

Terry Towels = 60 looms

Wt/gms	Size	Quality Name
0.50 gms	12*12	Colour to colour
0.70 gms	14*21	Colour to colour
0.100 gms	18*27	Colour to colour
0.250 gms	24*48	Colour to colour
0.300 gms	27*54	Colour to colour
0.450 gms	30*60	Colour to colour
0.550 gms	30*72	Colour to colour
0.600 gms	36*72	Colour to colour

Department	Wages (per months)
Doubling Department	39500
Reeling Department	24000
Dying Department	23500
Winding Department	17000
Warping Department	15000
Stitching Department	18500
Packing Department	29000
Weaving Department	200000

Conclusion:-

Above table and diagram shows that absenteeism and breakdown carries major part in loss of production. Out of 100% capacity 39.46% is loss which is huge.

Findings and observations

1.Observation of Chadders Production :-

1)It is observed that the production of the chadders demand starts from May 2011 to December 2011. In that 8 months chadders production is very high and slowly decrease in April 2011 because of no demand

Please cite this Article as : Dr.R.L.Laddha , A study of Production Planning and Control of Chaddars and Towels with special reference to Siddeshwar Textiles, Solapur. : Indian Streams Research Journal (April ; 2012)

of chadders in that period.

2)It is observed that Rangoli is the lowest production in total chadders production because of less demand in the market.

3)It is observed that total production of Sanny is highest because more demand in market.

2.Observation of Towel Production:-

1)It is observed that the demand of the towel starts from May 2011 and in period of June 2011 to September 2011. There is slack in the market from the months of October 2011 demand slowly increase.

2)It is observed that the total production of 30x60 (350 gms) quality of towel was lowest production in the above all qualities.

3)The production of 14x21 (70 Gms) quality towels highest production in among all the qualities.

4)It is observed that absenteeism and breakdown are major part in loss of production.

Conclusions

1)Training And Development Of Employee:-

The company could arrange various training and development program for the employees to improve the skill and knowledge of the employees result in increases in their job performance.

2)Material Handling System:-

Installation of this material handling systems the rate of movement of material increase with reduction in manpower and time. Also chances of damaging of material and accidents of employees are reduced.

3)Provision of Store Room:-

Can arrange for adjustable racks and boxes for storage of raw material and finished items.

4)Employee could be given financial help if required for incurable disease like cancer etc.

5)Company regularly updating their plant technology for better production quality.

6)Management is given more emphasis on medical facility and safety equipment of employee like gloze, masque etc.